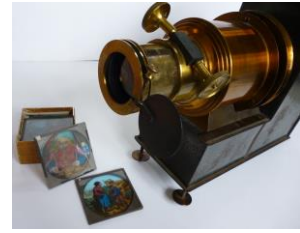
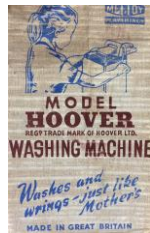


## Information for Teachers

# Play and Pastimes KS 2

### at Peterborough Museum

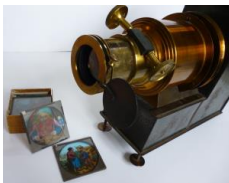


Peterborough Museum has a large selection of toys and games dating back from Victorian times to the 1970s - perfect for topics looking at playtime, childhood, forces and materials.



### Play

How does the concept of change, cause, similarity and difference apply to a selection of toys and games from our collection? Get up-close to some additional toys and play parlour games, just like Victorian children did in the past. Then, sit back and enjoy a magic lantern show, another great Victorian past-time.



### Make

Sit back and enjoy a magic lantern show, another great Victorian past-time. Then make a magic lantern slide inspired by our collection.



**Play Museum Mystery Game:** Inspired by the popular game Cluedo, the museum has been turned into a real-life sized board game! A crime has been committed; Elizabeth the doll has lost her arm... roll the dice, search the gallery rooms for clues. As you explore, look out for real life suspects. You may wish to question them on their whereabouts... Then decide; who did it, where did they do it and with what?

**National Curriculum links:** History, English, Science, Art.



## Learning objectives:

### Participating in these Toy Stories activities, pupils will:

- Develop an awareness of the past by identifying and discussing changes in toys & games over time.
- Be able to identify and discuss connections, contrasts and trends over time.
- Develop an understanding of how old toys can help us find out about the past.
- Speak audibly and fluently when sharing ideas and observations.
- Describe the simple physical properties of each material from looking carefully at the toys.
- Consolidate understanding of forces such as push and pulls when describing how a toy moves.
- Be able to recognise and explain how a light source enables a magic lantern to work.
- Develop creative skills in selecting from a range of materials to produce a toy/game

## Other information:

<b>Duration:</b>	Each activity is 40 mins – 1 hour long. Full day is from 10 am – 2pm.
<b>Cost:</b>	£200 for the full day plus use of lunchroom. Please contact us if you would like a half day visit.
<b>Maximum group size:</b>	Maximum number per group is 30 and the site can accommodate up to two groups at any one time. Talk to us if you wish to bring three groups on one day.
<b>Recommended ratio:</b>	1 adult to 8 pupils.
<b>Booking information:</b>	To book, please contact us by phone or email. When the activities and date are agreed, a booking form and risk assessment is emailed to you. To confirm the visit we ask that you complete the booking form and email it back to us.
<b>A note about behaviour:</b>	School teachers have overall responsibility for the behaviour of their pupils and we expect you to support Museum staff with this where necessary. As you know, pupils benefit significantly when school staff and adults also get involved in the activities so please join in where appropriate.
<b>Optional and additional activities:</b>	<b>Christmas theme?</b> Talk to us about how we can adapt the 'Play and pastimes' to look at how families celebrated Christmas in the past.
<b>Outreach?</b>	We can bring a range of toys and games from the past to your school. Please contact us for further information and costs.