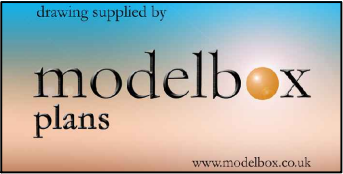


THIS COMPUTER DRAWING IS BASED ON DRAWINGS NOT PREPARED BY MODELBOX. MODELBOX DOES NOT ACCEPT ANY LIABILITY FOR DIRECT OR CONSEQUENTIAL LOSS OR DAMAGE ARISING FROM ERRORS OR INACCURACIES IN THIS COMPUTER DRAWING HOWSOEVER CAUSED AND WHETHER THE RESULT OF NEGLIGENCE OF MODELBOX, ITS SERVANTS OR OR AGENTS. USERS INTENDING TO RELY ON THIS COMPUTER DRAWING SHOULD INDEPENDENTLY CHECK THE ACCURACY THEREOF.



NOTES

SHADED AREA SHOWS AN AREA WITH SERVICES. CHECK ON SITE FOR CLEARANCE

HOUSELIGHTS THOUGHOUT AREA @+5250 (AVERAGE)

ALL HEIGHTS TAKEN RELATIVE FROM A POSITIOIN CENTRE STAHE. NB. THE STAGE LEVEL DOES VARY ±15MM.

THE LX/RIGGING BARS (BLUE) HAVE AN AVERAGE HEIGHT OF 5810MM (±30MM). NB. THE BARS TEND TO BE HIGHER AT THE UPSTAGE END

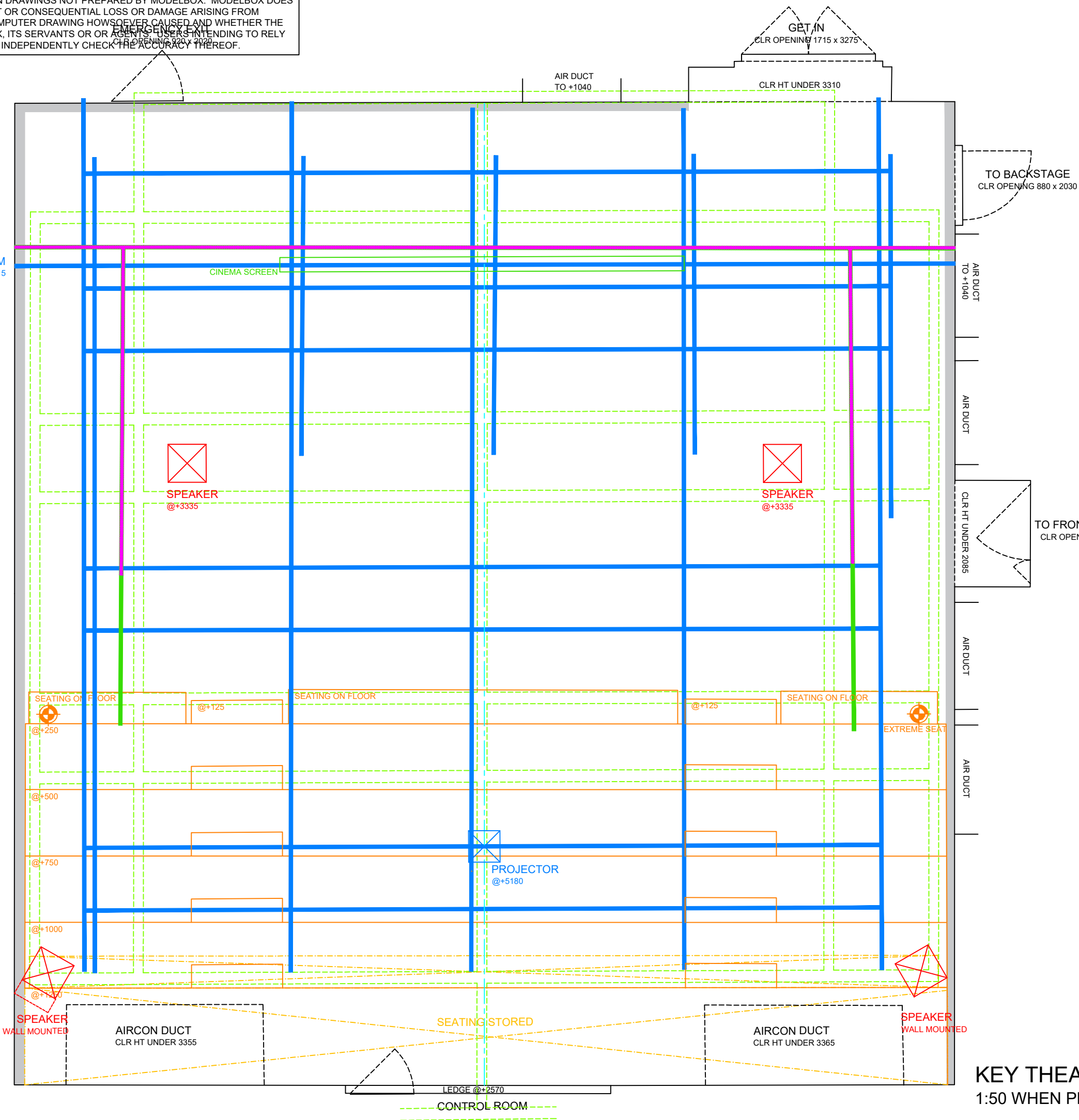
THE ROOF BEAMS HAVE AN AVERAGE HEIGHT OF 5550MM (±20MM). NB. THE BEAMS TEND TO BE HIGHER AT THE UPSTAGE END

THE TAB TRACK BARS HAVE AN AVERAGE HEIGHT OF 5360MM (±30MM). NB. THE BARS TEND TO BE HIGHER AT THE UPSTAGE END

AVERAGE HEIGHT TO CEILING BEAMS - 7990MM

AVERAGE HEIGHT TO CEILING - 8480MM

LADDER BEAM  
BARS @5515 & 5815



KEY THEATRE STUDIO, PETERBOROUGH  
1:50 WHEN PLOTTED ON A3