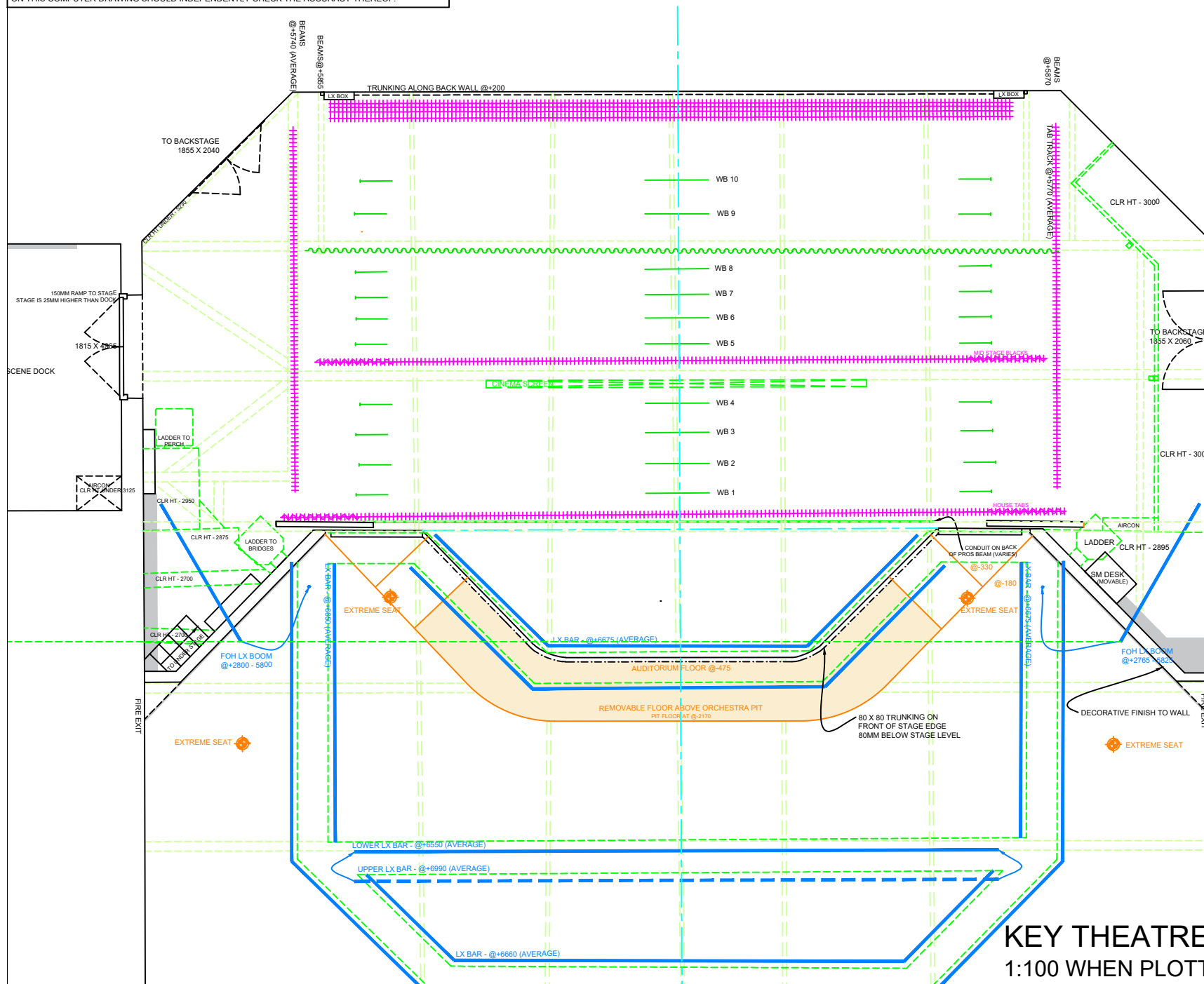


THIS COMPUTER DRAWING IS BASED ON DRAWINGS NOT PREPARED BY MODELBOX. MODELBOX DOES NOT ACCEPT ANY LIABILITY FOR DIRECT OR CONSEQUENTIAL LOSS OR DAMAGE ARISING FROM ERRORS OR INACCURACIES IN THIS COMPUTER DRAWING HOWSOEVER CAUSED AND WHETHER THE RESULT OF NEGLIGENCE OF MODELBOX, ITS SERVANTS OR AGENTS. USERS INTENDING TO RELY ON THIS COMPUTER DRAWING SHOULD INDEPENDENTLY CHECK THE ACCURACY THEREOF.

drawing supplied by

modelb^ox
plans

www.modelbox.co.uk



BARS/TRUSS	TRACKS	NOTES
	4 X TAB TRACKS (FIXED) AVERAGE HT - 5660	
WINCH BAR 10		
WINCH BAR 9		
FIXED BORDER		HT - 5450
WINCH BAR 8		
WINCH BAR 7		
WINCH BAR 6		
WINCH BAR 5		
	FIXED TRACK HT - 6145	MID STAGE BLACKS OPERATED FROM FLY FLO
WINCHMA SORREN		HT - 5450
WINCH BAR 4		
WINCH BAR 3		
WINCH BAR 2		
WINCH BAR 1		
	HOUSE TAB TRACK HT - 6160	HOUSE TABS

NOTES

SHADED AREA SHOWS AN AREA WITH SERVICES. CHECK ON SITE FOR CLEARANCE

THE BUILDING DOES VARY IN HEIGHT THROUGHOUT
MAKING HEIGHTS VARY. CHECK ALL CRITICAL
HEIGHTS ON SITE.

ALL HEIGHTS TAKEN RELATIVE FROM A POSITION
DOWN STAGE CENTRE. NB. THE STAGE LEVEL DOES
VARY $\pm 25\text{MM}$.

KEY THEATRE, PETERBOROUGH
1:100 WHEN PLOTTED ON A4